



Northern Chesapeake Region  
Serving Harford, Cecil & Kent Counties

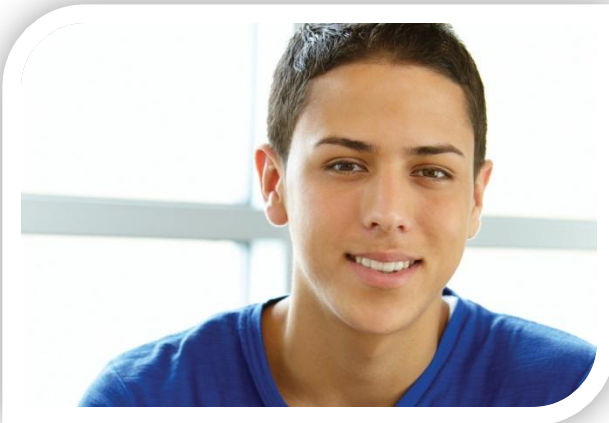
**Achieve with us.**

*For people with intellectual and developmental disabilities*

**FOR IMMEDIATE RELEASE**  
May 3, 2012

**Contact:** Elaine Orbino  
410-879-6785  
eorbino@arcncr.org

## **MAY IS NATIONAL FOSTER CARE MONTH**



[Aberdeen]- What do teachers, photographers, government workers, truck drivers, computer programmers and stay-at-home moms and dads have in common? They are all foster parents for The Arc Northern Chesapeake Region! They come from different backgrounds, professions, cultures, and neighborhoods, but they all have made a commitment to help a teenager or child in the foster care system. "This is the month when we honor the amazing

families who give healing homes to children

and teenagers," explained Sherry Nolte, Director of Family Services at The Arc Northern Chesapeake Region. "We have several activities planned, including a dinner to honor our parents."

Did you know there are over 408,000 American children in foster care? Maryland has approximately 9,000 children in foster care. The foster care program at The Arc Northern Chesapeake Region serves over 30 of those children each year, in Harford, Cecil and Baltimore Counties.

Like all children, youth in foster care deserve and benefit from enduring relationships with caring adults. Across the country, people just like you are helping these youth build brighter futures by serving as their foster parents, mentors, social workers and volunteers. But much more help is needed. May is National Foster Care Month. No matter how much time you have to give, you have the power to do something positive that will change a lifetime for a young person in foster care. Get involved. Make a difference.

For more information, please contact Kathy Pitrat at 410-836-7177 or [fostercare@arcncr.org](mailto:fostercare@arcncr.org) to find out more about becoming a foster parent or how you can help a child in care!

*The Arc Northern Chesapeake Region offers a wide variety of services to individuals with intellectual and developmental disabilities, both children and adults, in Harford, Cecil, and Kent counties, to make informed choices with their lifestyles, vocations, education and recreational pursuits, and to assure stable and nurturing lives among their families and friends.*